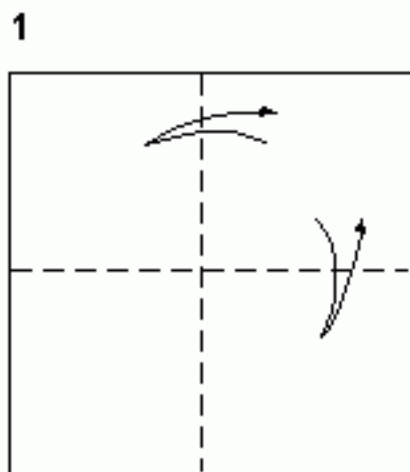
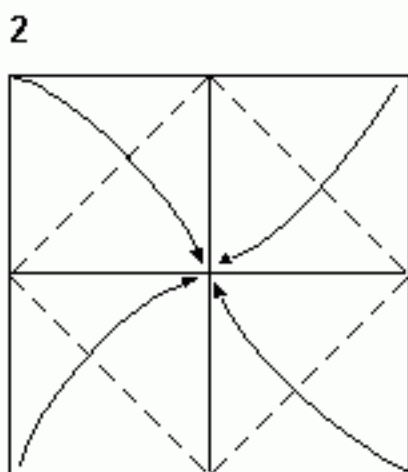


SIMPLE BOX

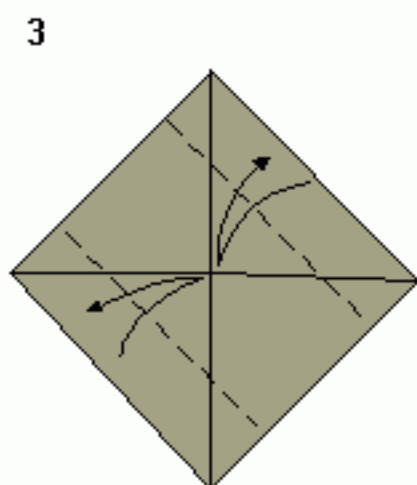
In Japan this model is known as "Masu Box" = measuring box



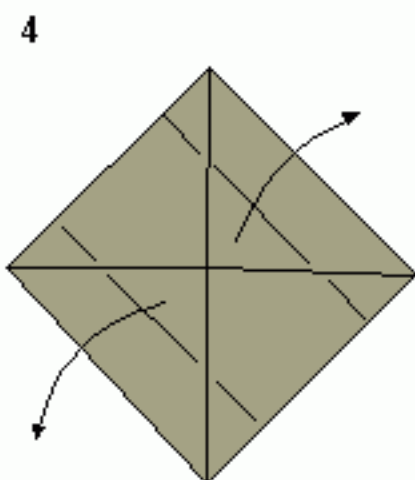
crease and return



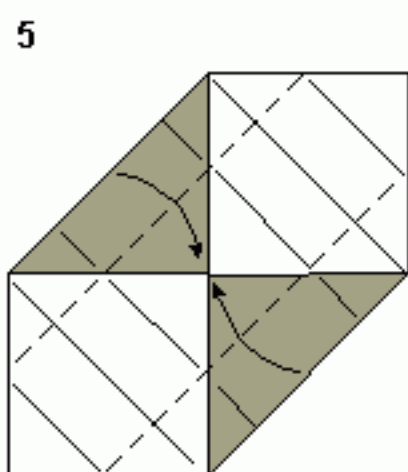
fold tops to centre
this is called a blinz fold
after a Jewish pastry



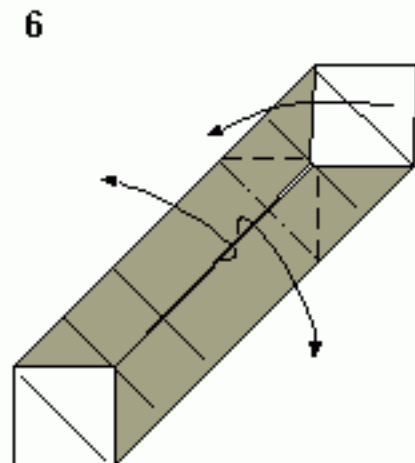
fold sides to centre
and return



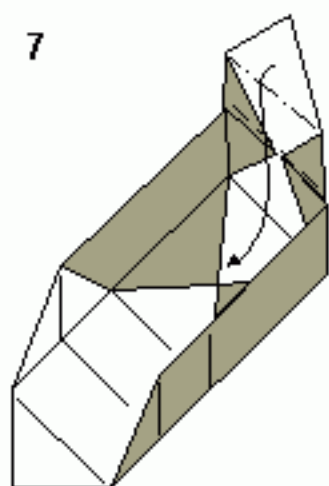
open two corners



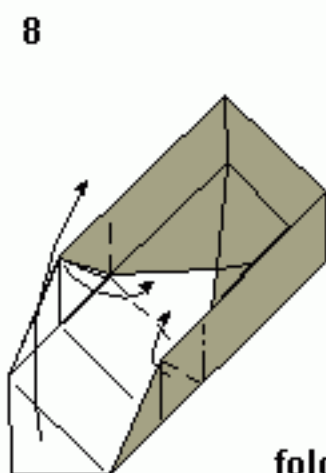
fold sides to centre



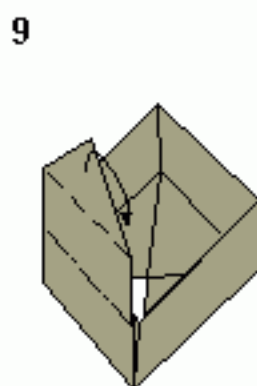
lift both sides and
one end
model becomes 3D



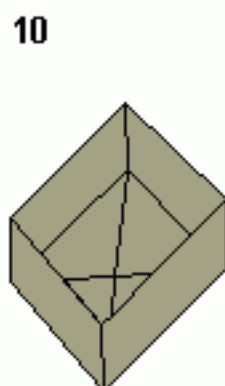
fold flap into centre



raise end



fold flap into centre



complete